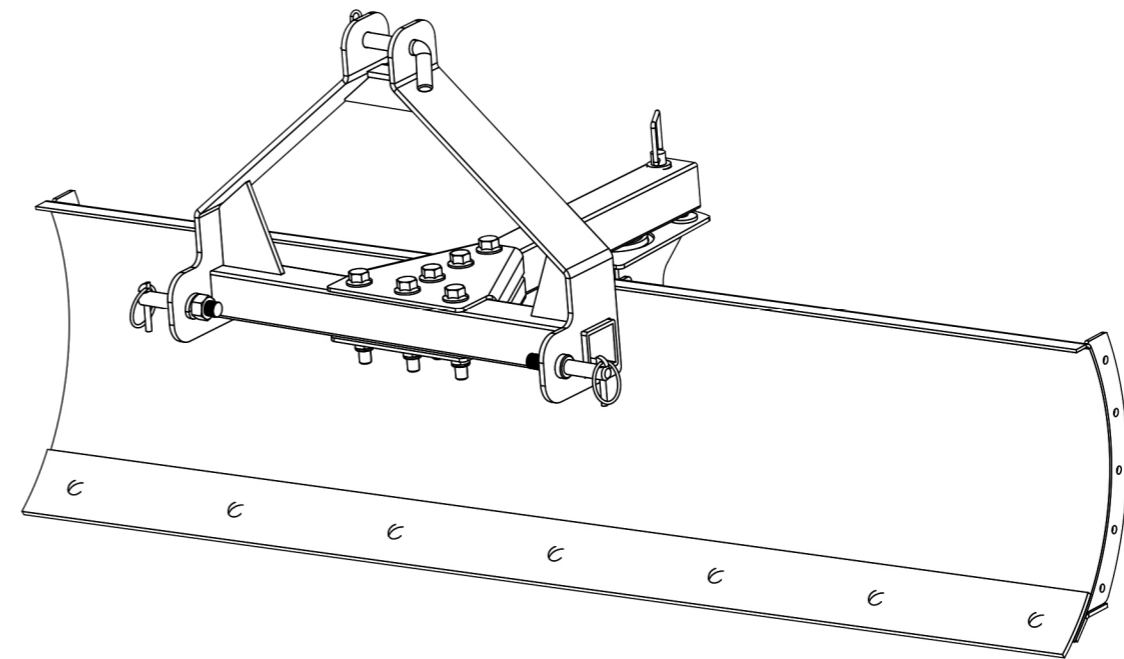




motoalliance

23001 Industrial Blvd, Rogers, MN 55374 / 1-866-527-7637
www.motoalliance.com - 411@motoalliance.com



BEFORE YOU BEGIN:

- Please read and understand all instructions.
- Verify all parts and tools are accounted for.
- To ensure a satisfactory installation, follow all steps correctly and in the sequence described.
- All directions referring to right and left are when the rider is sitting on the machine

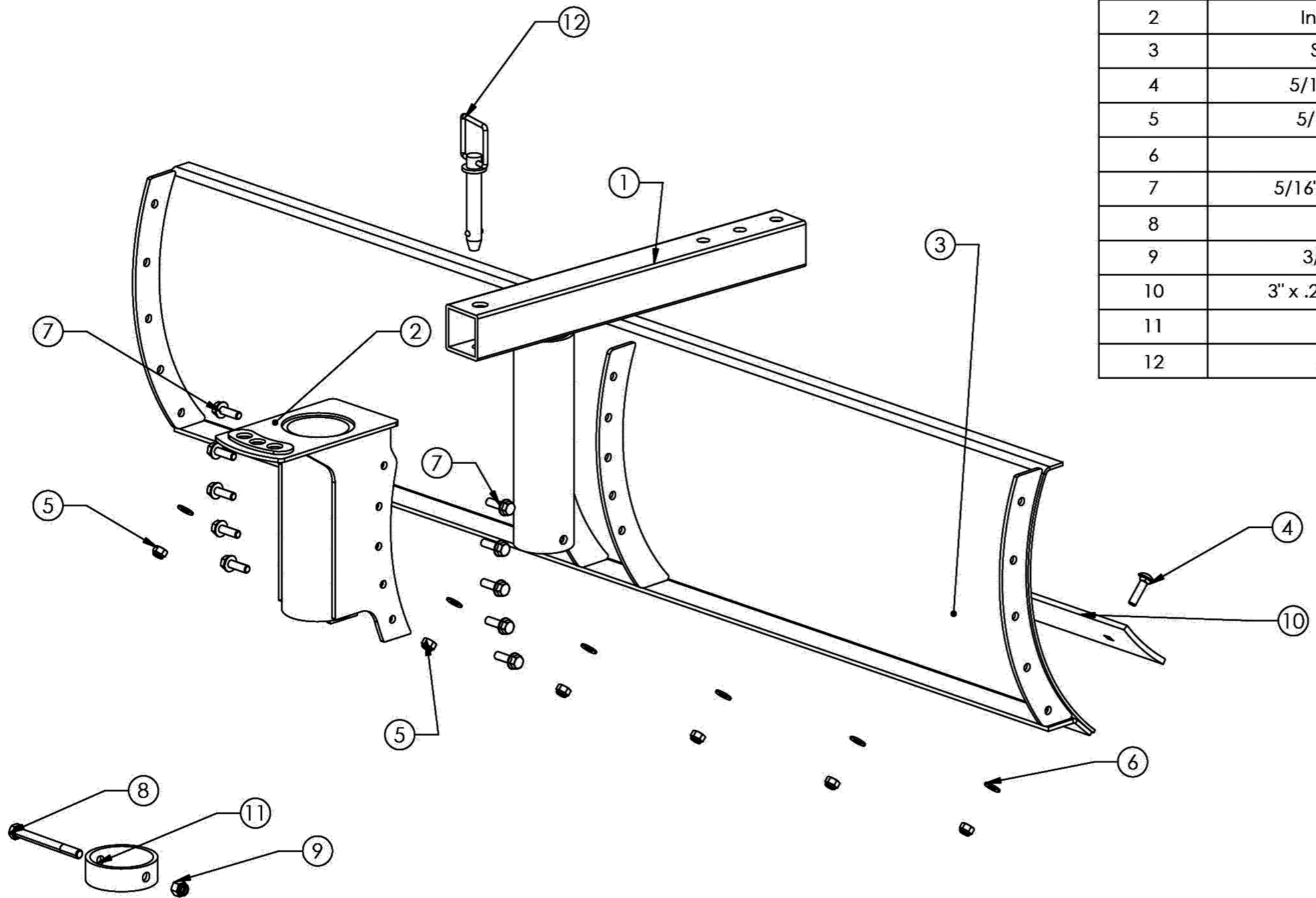
INSTALLATION NOTES: TOOLS REQUIRED:

- Basic Hand Wrench and Socket Set
- Plastic Cutting Tool - for opening packaging.

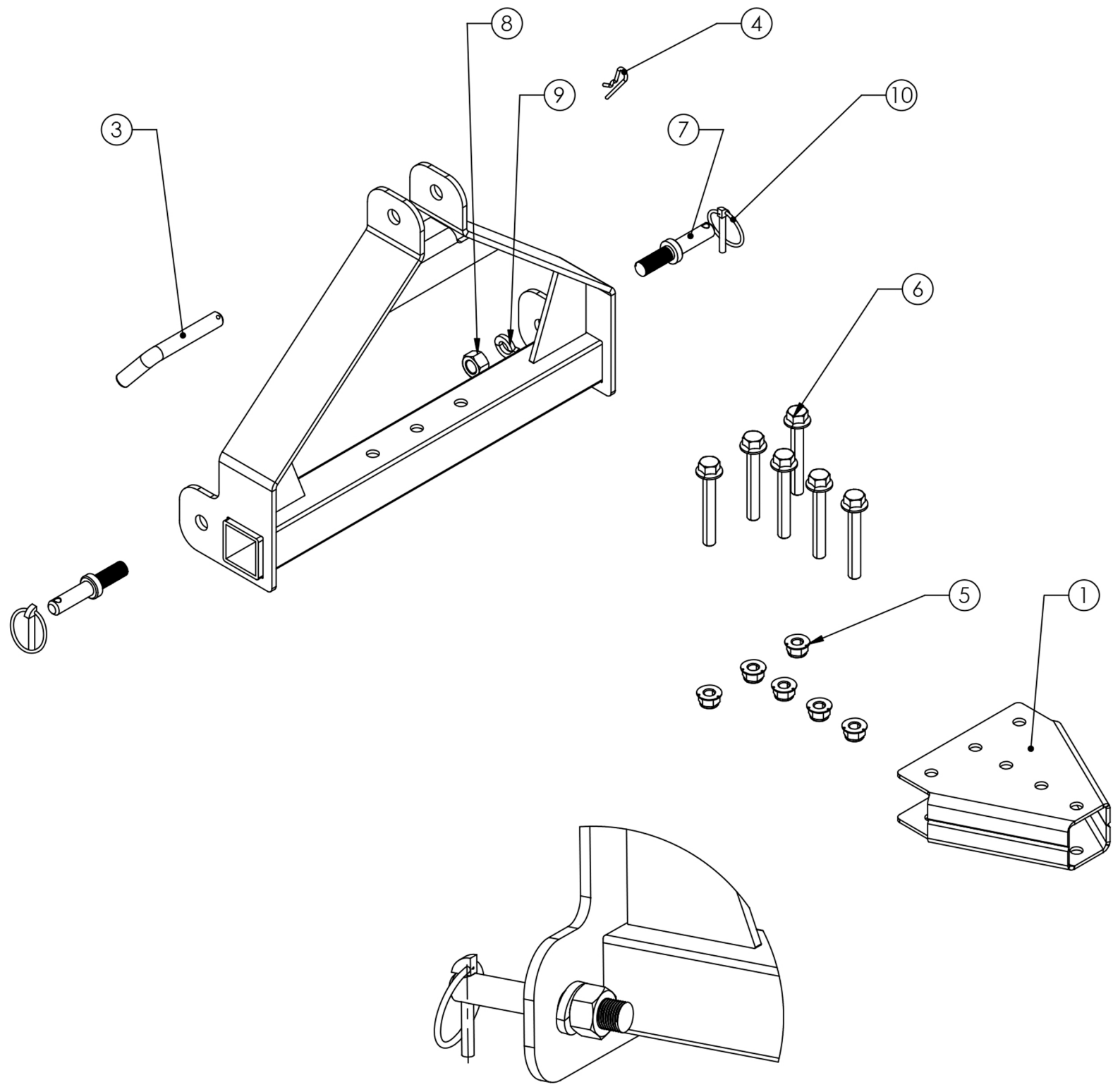
UPC 810541023112

ITEM# IP-6000

DESCRIPTION: Impact® 3-Point, Rear Grading Blade



ITEM NO.	DESCRIPTION	QTY.
1	Receiver Pivot Assembly	1
2	Index Frame / Blade Mount	1
3	Scraper Blade Weldment	1
4	5/16" - 18 x 1.25" Carriage bolt	7
5	5/16"-18 Grade 5 Nylock Nut	7
6	5/16" Flat washer	7
7	5/16" x 1" Flange bolt - zince finish	10
8	3/8" -16 Grade 5 bolt	1
9	3/8"-16 Grade 5 Nylock nut	1
10	3" x .236" (6mm) x 52" Cutting Edge	1
11	Retaining collar	1
12	Hitch Pin w/detent balls	1



DETAIL B
SCALE 1 : 2

ITEM NO.	DESCRIPTION	QTY.
1	Tube Mount Weldment	1
2	Cat 0 A-Frame Weldment	1
3	5/8" x 3.5L Bent Pin	1
4	5/32" Hitch Pin R clip	1
5	1/2"-13 Grade 5 Zinc Finish Nylon Insert Flange Nut	6
6	1/2"-13 x 3-1/2" Zinc Finish Grade 5 Hex Flange Bolt	6
7	Category 0 lift pin (5/8")	2
8	5/8"-18 Zinc Finish Grade 5 Hex Nut	2
9	5/8" Zinc Finish Heavy Split Lock Washer	2
10	1/4" Lynch Pin	2

